



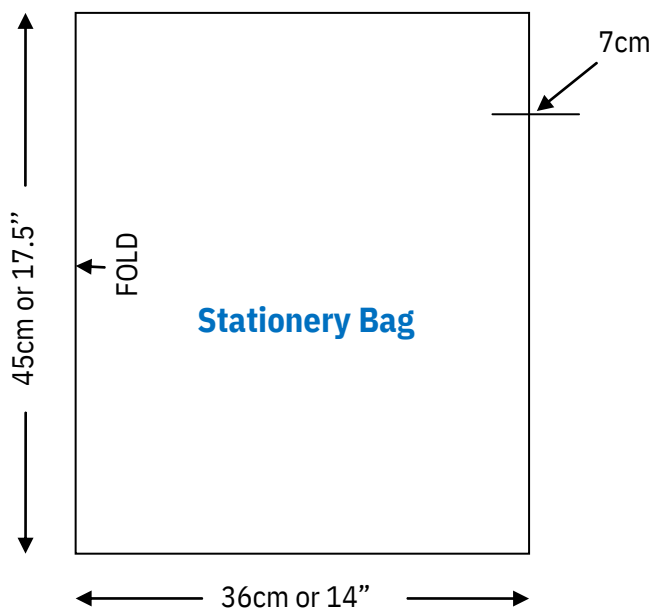
## Backpacks 4 VIC Kids

### Stationery and Toiletry Bag Sewing Instructions

We have delivered more than 17,000 **ME** packs to children in need since April 2015. Each backpack sent out to children in foster care or emergency accommodation includes a handmade stationery bag and a toiletry bag. Each bag is packed with age and gender appropriate items of stationery and toiletries

If you would like to help us by making some of these bags please follow the instructions below.

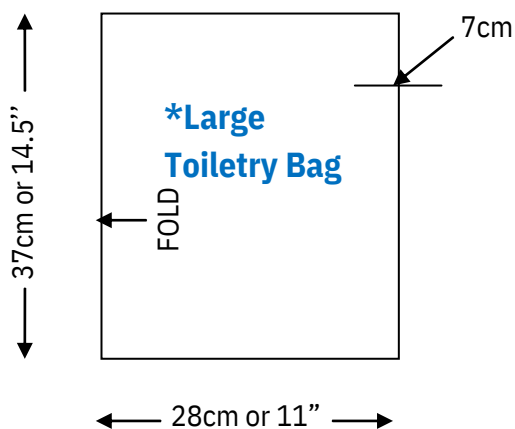
Donations of suitable fabric would also be gratefully appreciated. Thank you for your support.



#### Stationery Bag

You will need:

- Sturdy cotton or poly/cotton material
- NO** slippery, stretchy or sheer material
- 45cm x 72cm – folded in half as shown in diagram
- If possible, age appropriate patterned material as these bags could be for Kinder to High School age children
- Red or dark material should be washed first and ironed to make sure dye doesn't run
- Pyjama cord or ribbon for threading



#### Toiletry Bag \* Other sizes below

You will need:

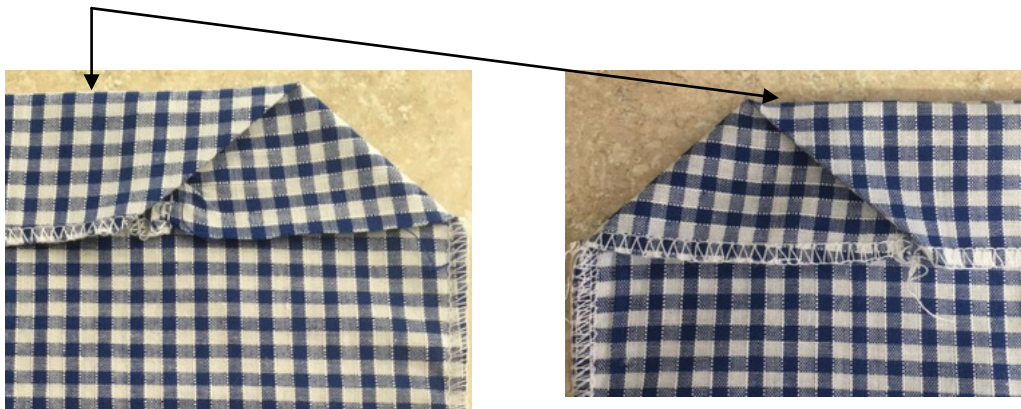
- Sturdy cotton or poly/cotton material – quilter's quarters are okay
- NO** slippery, stretchy or sheer material
- 37cm x 56cm – folded in half as shown in diagram
- If possible, age appropriate patterned material as these bags could be for Kinder to High School age children
- Red or dark material should be washed first and ironed to make sure dye doesn't run
- Pyjama cord or ribbon for threading

**PLEASE NOTE:** You can use two pieces of fabric instead of one piece folded over.

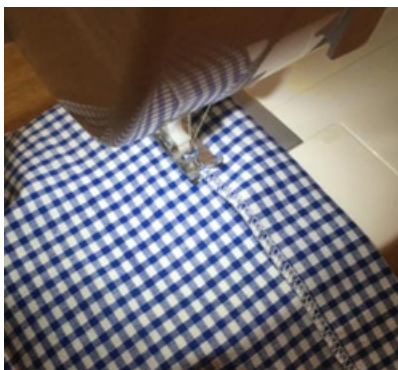
- 1 Fold material as shown in diagrams on page 1.
  - . Leaving a 7cm opening at the top, on the opposite side of the fold, overlock or zig zag from this point to the fold.
- 2 point to the fold.
  - . Overlock or zig zag top edges and both sides of 7cm opening.
  - Fold over a triangle of 7cm and then match up the other side.



5. Turn down top edge level with the triangle fold section on both edges. Press to keep in place.

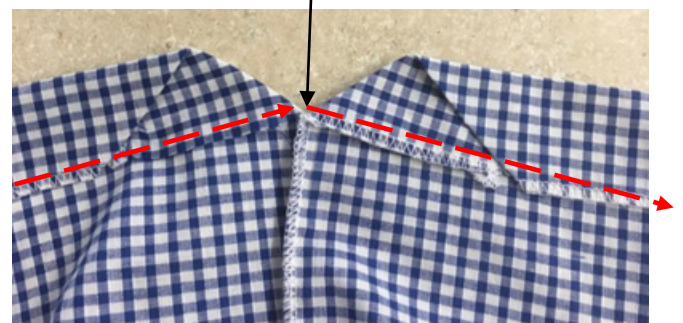


6. Stitch right across the opening. This makes the casing for the pull cord/ribbon.



Start stitching here and follow the arrows. Backstitch at beginning and end.

7. Thread casing with pyjama cord or ribbon making sure to leave enough cord or ribbon to make a knot.





# TOILETRY BAG SIZES



**Size 0-3**

**28cm x 25cm**

**Size 4-6**

**32cm x 28cm**

**Size 7-10**

**32cm x 28cm**

**Sanitary**

**15cm x 23cm**



**Size 12-18**

**37cm x 28cm**

