



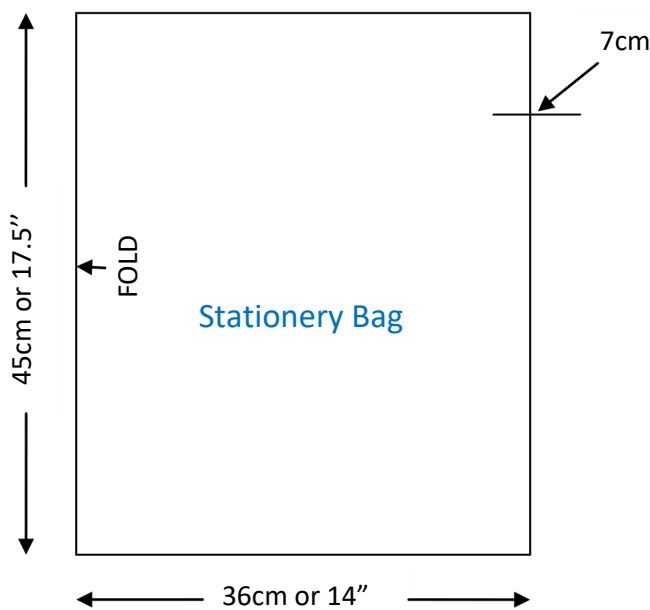
Backpacks 4 VIC Kids

Stationery and Toiletry Bag Sewing Instructions

We have delivered nearly **25,000** My Essentials Packs to children in need since 2015. Each backpack sent out to children in foster care or emergency accommodation includes handmade drawstring bags including: stationery bags, sanitary bags and toiletry bags. Each bagged is carefully packed with age-appropriate items.

As we pack different items in each bag, depending on age, we use multiple sizes of bags. Please see the last page for finished sizes of the bags.

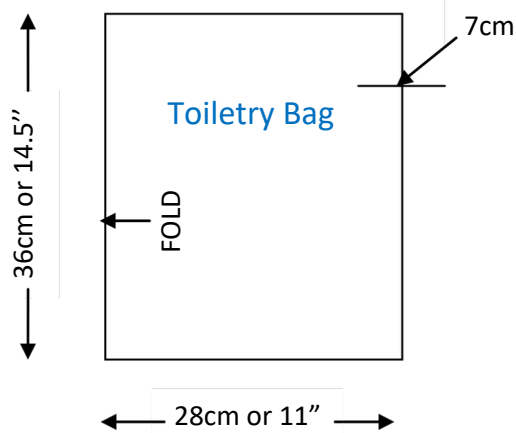
Donations of suitable fabric would also be gratefully appreciated. Thank you for your support.



Stationery Bag - all ages

You will need:

- Sturdy cotton or poly/cotton material
- NO slippery, stretchy or sheer material
- 45cm x 72cm – folded in half as shown in diagram
- If possible, age appropriate patterned material as these bags could be for Kinder to High School age children
- Red or dark material should be washed first and ironed to make sure dye doesn't run
- Pyjama cord or ribbon for threading



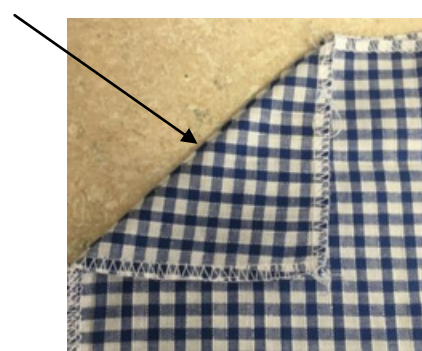
Toiletry Bag - size 4-10 + 12-18 boys

You will need:

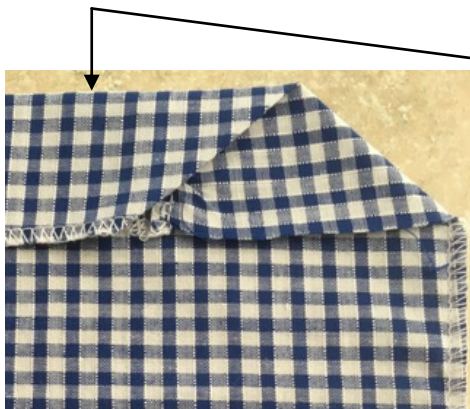
- Sturdy cotton or poly/cotton material – quilter's quarters are okay
- NO slippery, stretchy or sheer material
- 36cm x 56cm – folded in half as shown in diagram
- If possible, age appropriate patterned material as these bags could be for Kinder to High School age children
- Red or dark material should be washed first and ironed to make sure dye doesn't run
- Pyjama cord or ribbon for threading

PLEASE NOTE: You can use two pieces of fabric instead of one piece folded over.

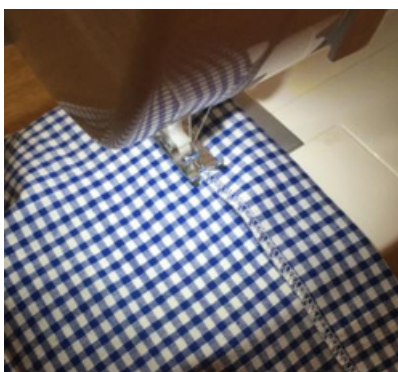
1. Fold material as shown in diagrams on page1.
2. Leaving a 7cm opening at the top, on the opposite side of the fold, overlock or zig zag from this point to the fold.
3. Overlock or zig zag top edges and both sides of 7cm opening.
4. Fold over a triangle of 7cm and then match up the other side.



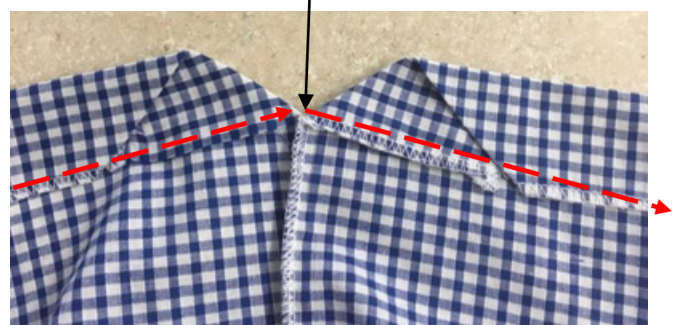
5. Turn down top edge level with the triangle fold section on both edges. Press to keep in place.



6. Stitch right across the opening. This makes the casing for the pull cord/ribbon.



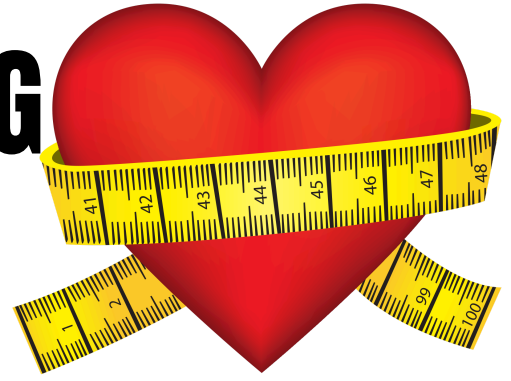
Start stitching here and follow the arrows. Backstitch at beginning and end.



7. Thread casing with pyjama cord or ribbon making sure to leave enough cord or ribbon to make a knot.



DRAWSTRING BAG SIZES



**Toiletry
Size 0-3**

28 cm x 25cm

**Toiletry
Size 4-10**

32 cm x 28cm

**Toiletry
12-18 boys**

32 cm x 28cm

**X Small
(Sanitary)**

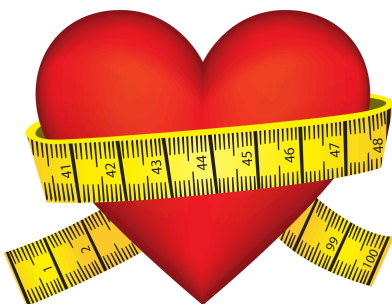
27 cm x 19cm

**XX Small
(Sanitary)**

19 cm x 19 cm

**Toiletry
12-18 girls**

36 cm x 36cm



**Stationery
Size 4-18**

40 cm x 36cm

